

## TouchMe User Manual


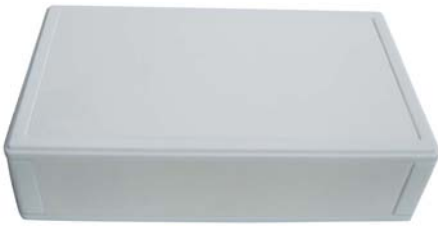



Version 1.0

TouchMe User Manual	1
<b>Package Contains</b>	<b>3</b>
<b>Learn About Your TouchMe</b>	<b>4</b>
TouchMe Phone and Magnet Stand Base Layout	5
Keypad	6
LCD Icons	6
<b>Getting Started</b>	<b>6</b>
Step 1:Install the Latest Skype Applications	6
Step 2:Install TouchMe Driver	6
<b>Update TouchMe Driver</b>	<b>11</b>
<b>The Call Functions</b>	<b>12</b>
Contacts Select	12
Make a Skype call	12
Make a SkypeOut call	13
Leave a Voicemail	13
Receive a Skype call	13
End a call	14
Receive and make a 2 <sup>nd</sup> call	14
<b>Other Functions</b>	<b>15</b>
Select Ring Tone and Speaker volume	15
Select Keypad tone	16
Set Auto Reply	17
Check Call History	17
<b>FAQ</b>	<b>18</b>

## Package Contains

When you receive your TouchMe Phone, please check to make sure that your package contains the following items:

	<p>One TouchMe phone</p>
	<p>Magnet Stand base</p>
	<p>One mini installation CD</p>

**Note:**

This user manual is written for the TouchMe driver **version 1.0.0.0**.

## Learn About Your TouchMe

### \* Product Overview

Plug into your computer's USB Port, the fully functional keypad and the LCD screen can help you make/receive Skype calls even easier. No doubt it is the best PC companion for you to surf the Internet and enjoy popular Skype services.

### Features:

- Touch technology utilized
- Seamlessly integrated with **Skype**
- 96\*64 pixel large LCD with backlight. Supports all kinds of languages
- Contact List, Call history display on LCD screen
- Various chord music ring tones catering to different tastes.
- Fully functional keypad and LCD screen enables you to make/receive calls without using keyboard and mouse.
- Rings loudly on an incoming call.
- Echo cancellation, noise reduction
- Magnet stand base

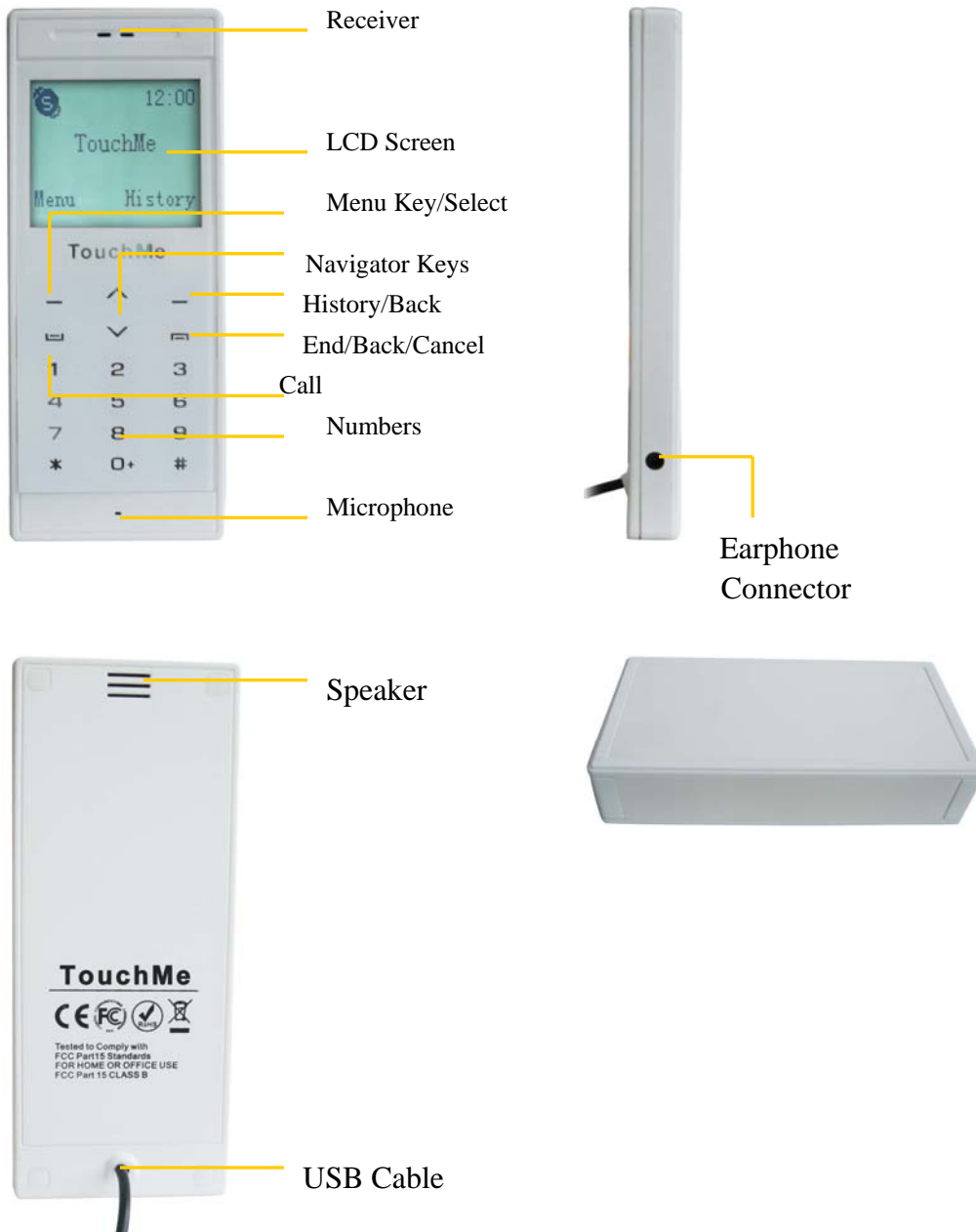
### \* Technical Data

<b>Weight</b>	Handset:70g Base:68g
<b>Dimensions</b>	Handset:116*48*10.8mm;Base:100*57.5*26mm
<b>Cabling</b>	1.5M USB Cable (USB 1.1),
<b>LCD</b>	40.7mm*41.2mm; 96*64 Pixel
<b>Earphone Connector</b>	2.5mm
<b>Voltage</b>	4~5.25 V
<b>Operating Humidity</b>	5~95%RH
<b>Operating Temperature</b>	-20~45°C




### \* System Requirements

- ✓ Microsoft Windows 2000/Windows 2003/Windows XP
- ✓ Pentium 400MHz above processor/128MB RAM/16MB free hard disk capacity.
- ✓ One USB port available.
- ✓ Internet connection (ADSL, Cable Modem, Dial-Up, Wireless LAN) for the VoIP Service.








TouchMe Phone and Magnet Stand Base Layout



**Keypad**

Key	Instructions
	Answer/Make a Skype call; OK;
	End/Cancel a Skype call; back to default screen/minimize Skype UI
	Scroll up/down a list; adjust volume for the speaker.

**LCD Icons**

Icons	Instructions	Icons	Instructions
	Skype Contact		Away status
	Online status		Offline status
	Unavailable status		Not sharing contact details
	Voice mail		

## Getting Started

To use this USB TouchMe phone, you need to install some needed software as shown below:

**Step 1: Install the Latest Skype Applications**

The latest version of Skype (Version 3.0 or above) is strongly recommended. You can download it from Skype’s official website:

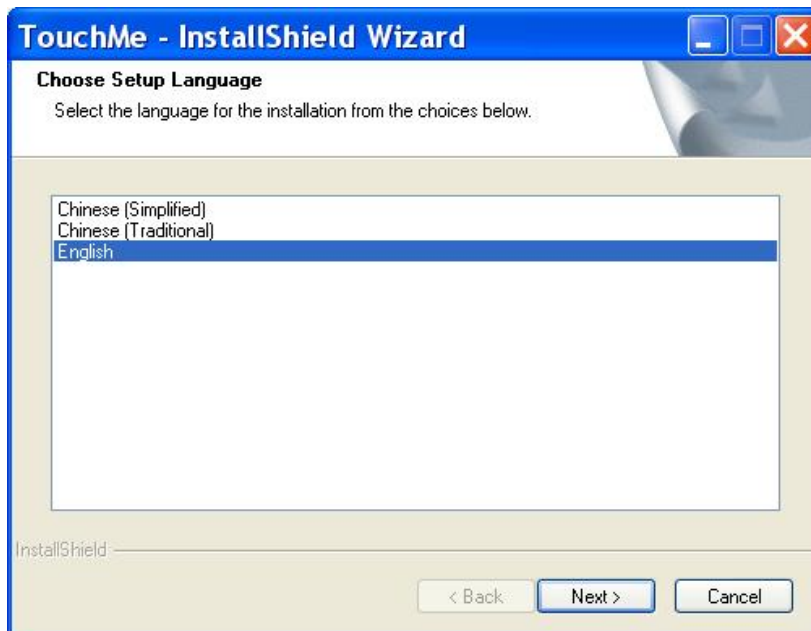
<http://www.skype.com>

**Step 2: Install TouchMe Driver**

You can insert the supplied installation CD into your PC, and run “Install Driver”. If you can not see the auto-run column, please install the driver manually. Open “My Computer”, you will see a “TouchMe” CD icon under “Devices with removable storage”, right click “TouchMe” CD icon, click “Open”, open “setup” folder, double click “setup.exe” to start installing.



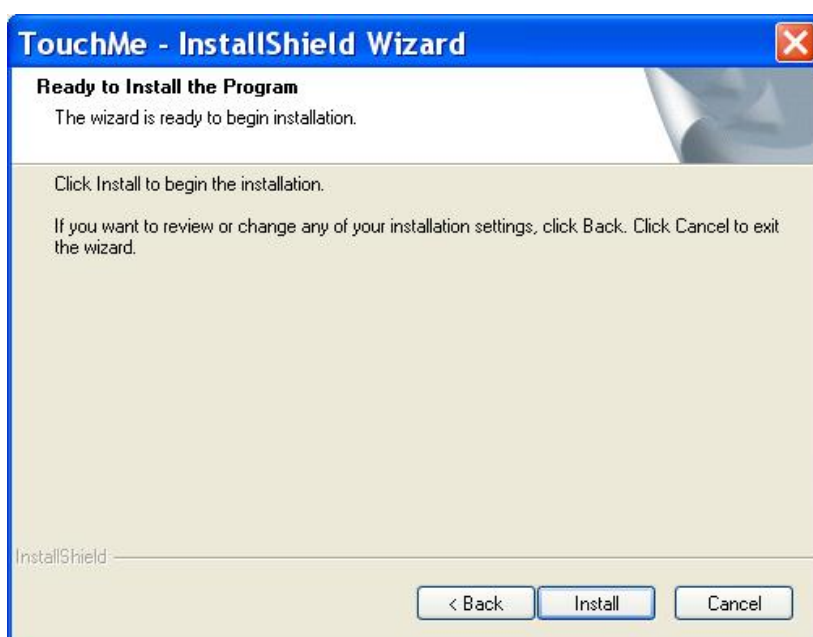
Click "Install Driver"



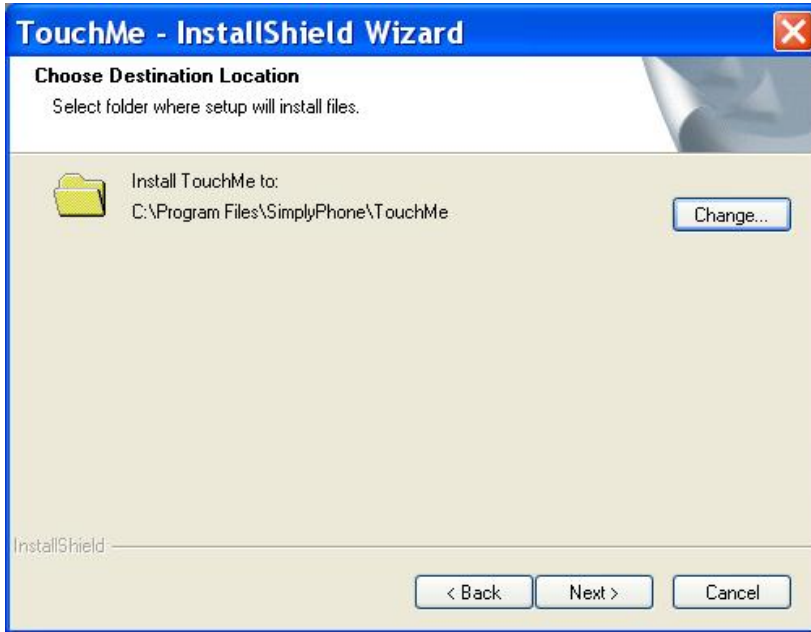
Select the language you want to install. Click "Next"



Click "Next"



Click "Install"

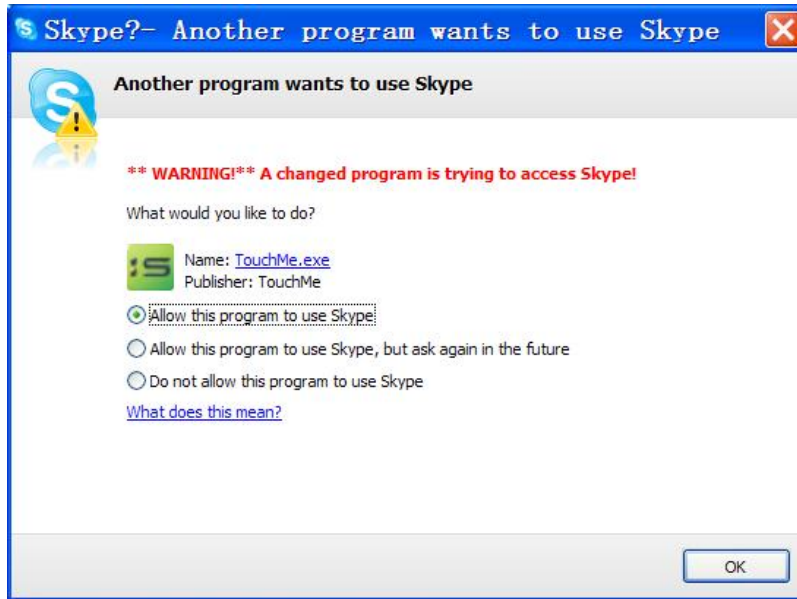



Choose the folder you want to install. Click “Next”







Select “Creat shortcut on Desktop”, then click “Finish”.

When the TouchMe phone driver runs for the first time, Skype will pop up the following window. Please select “Allow this program to use Skype” as the illustration shown below:



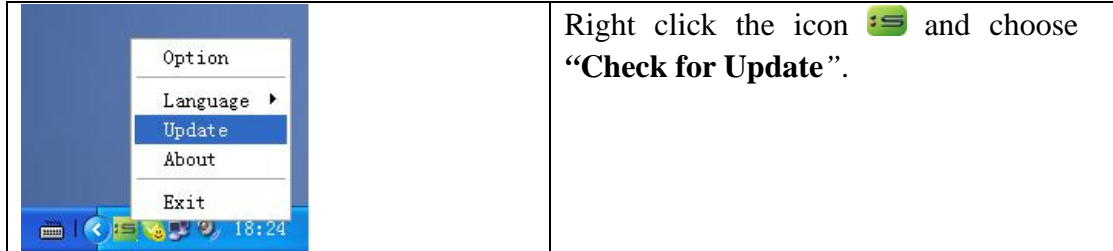
Now, the LCD screen will be shown as below and you can see a green icon  in the task bar which indicates you are ready to make/receive calls with the USB TouchMe phone.



Driver Icons	Indications
	TouchMe
	TouchMe fails to communicate with Skype applications.
	TouchMe fails to communicate with your computer.
	TouchMe was denied by Skype API

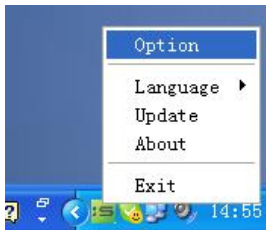
## Update TouchMe Driver

Please remember to update the USB **TouchMe** Phone driver regularly. You can follow this guideline here:

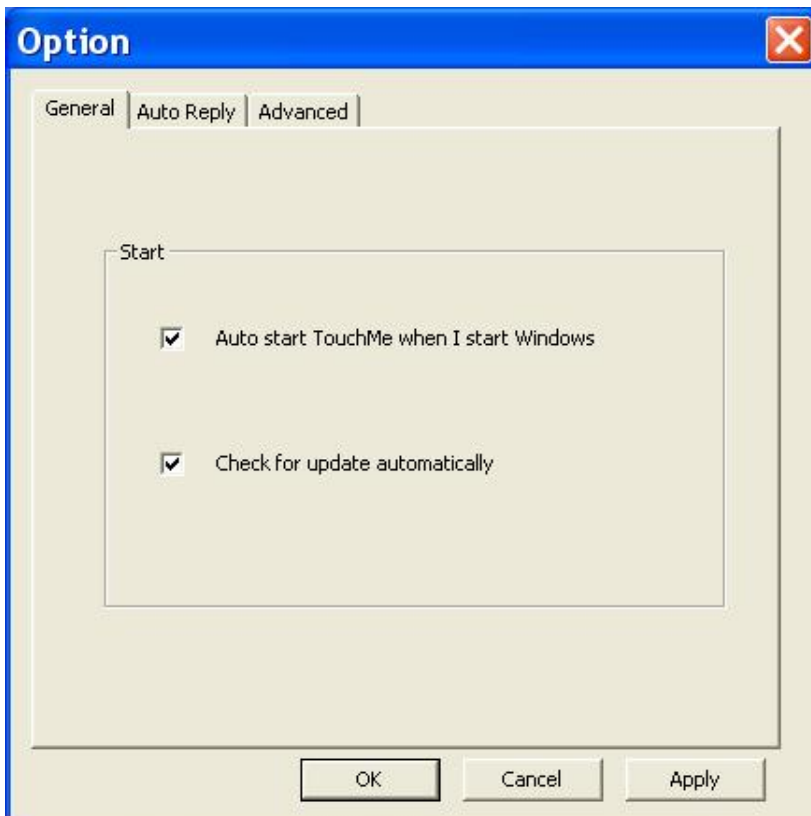


Or you can enable your driver to check for update automatically in the driver’s panel as follows:

- ① Right click the icon , and choose **“Options”**.



- ② Go to **“General”** panel and check before **“Check for update automatically”**.



## The Call Functions


### Contacts Select

Press Up/Down arrow to activate the contacts list,

- ① Hold Up/Down arrow, the contact will autoscroll up or down, and this device support loop scroll too.
- ② Select the contacts by initials, suppose you press key "7", it means you select the contacts with "P" initial, if you press key "7" second time, you will get the contacts with "Q" initial.




### Make a Skype call


- ① Select the contacts
- ② Press  to make the call.

**Note:**

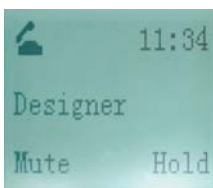
Or you can use Speed-dial number to make calls.

Dial the Speed-dial number and press  to make the call.

**Example:**


	<p>Supposed you want to make calls to this Skype contact. Please dial: "02" + </p>
--	---

- ③ "Mute" and "Hold" function



**Note:** For how to assign Speed Dial for your contacts, please refer to "FAO" O3 in this manual.

### Make a SkypeOut call

- ① Press 00 + “country code” + “city code” + “phone number”. Or hold “0”button + “country code” + “city code” + “phone number”.
- ② Press  to make the call.

Examples:

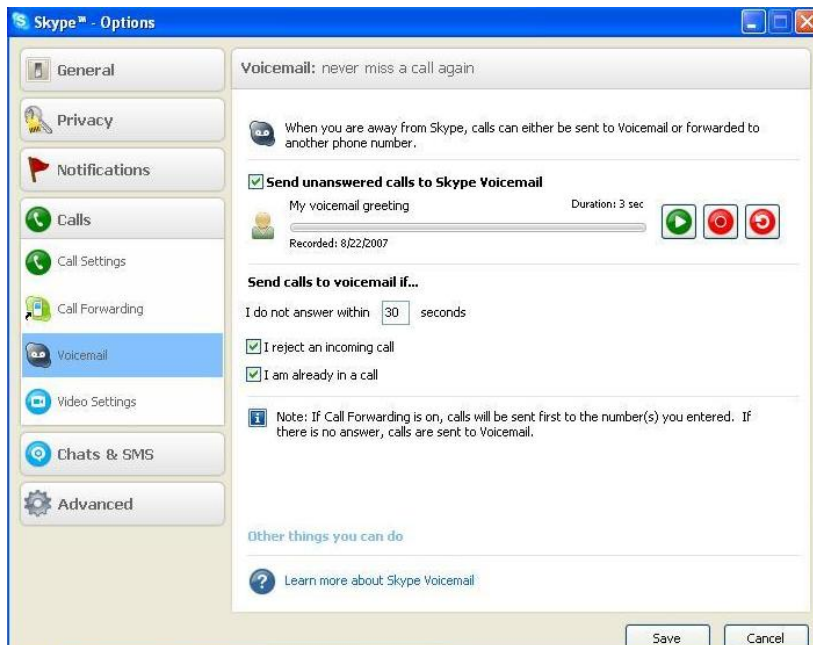
(Here we use the country code "1" for calling USA): 00 1 555 1234567

**Note:** For more detailed usages of making a SkypeOut call, please visit Skype’s official website: <http://www.skype.com>.

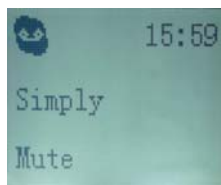
If you input a wrong number, please press right “—”key to clear it.

### Leave a Voicemail

If you call someone who has Skype voicemail function, you can leave a voicemail by using TouchMe.




When you leave a Voicemail you will see the screen of TouchMe:




But when someone leave you a Voicemail ,it can not show in TouchMe, you should play the Voicemail in Skype UI.


### Receive a Skype call

Press  to receive calls.

If you find the volume of earpiece is too small or too big, you can use Up/Down arrow to adjust the volume.

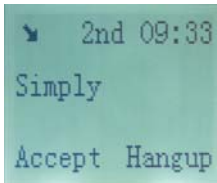
### End a call

Press  to end a call.

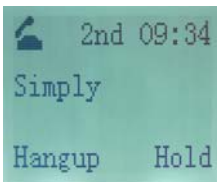
If you want to minimize the Skype UI after ending your call, please press  again. Then you can put the handset on the top of base, the handset will stand on it because it has magnet and handset has magnet too.

### Receive and make a 2<sup>nd</sup> call

① If you receive a second call when you are talking with someone, you will hear the beep and you can choose to “Accept” or “Hangup”:

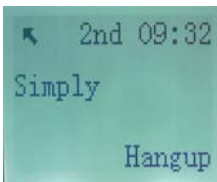


If you choose “Accept”, you can talk with the second caller while the first call will be held automatically.

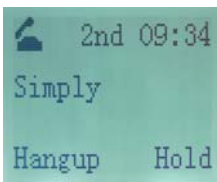


You can switch between the two contacts by using “Hold” key.

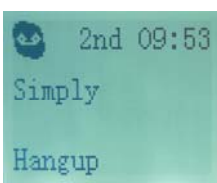
② If you want to make a second call when you are talking with someone, you’d have to make the call in Skype UI. The screen shot will be like this:



If he/she receive your call, you can switch between the two contacts by using “Hold” key.




If he/she is not available and he/she has Skype Voicemail function, you can leave a Voicemail to him/her.

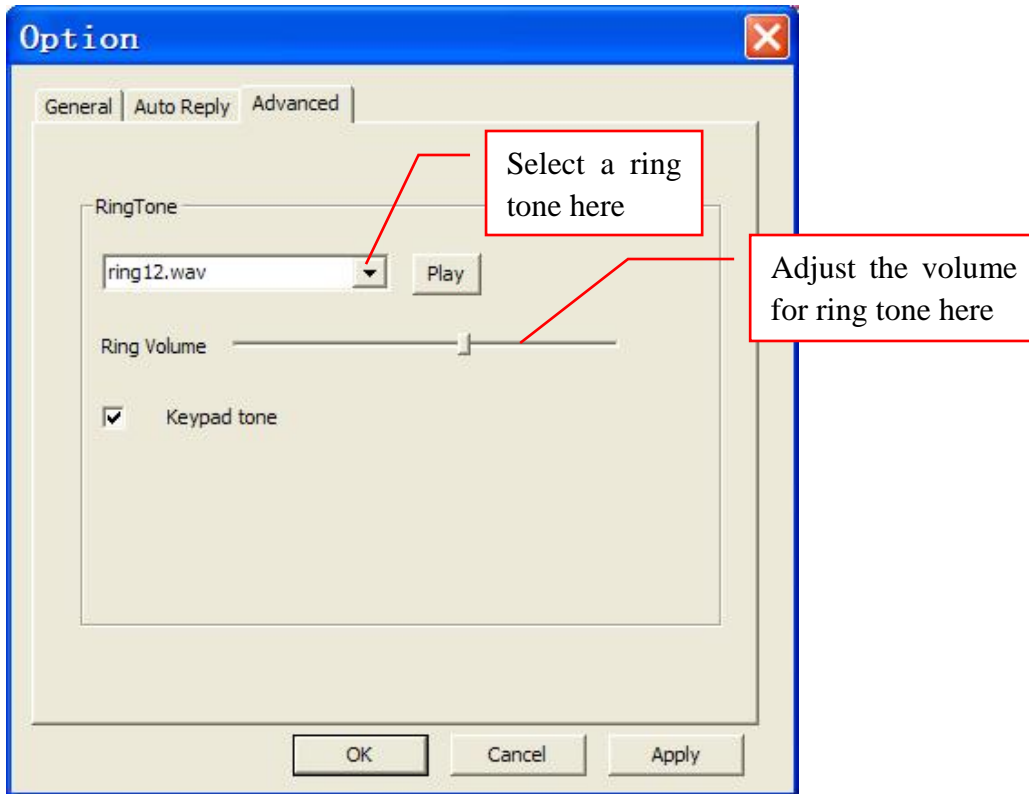


## Other Functions

### Select Ring Tone and Speaker volume

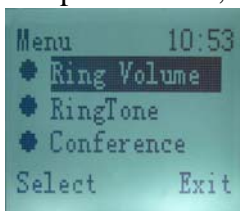
①. Select ring tone and speaker volume in driver

To select your favorite chord music ring tone, please right click the tray icon , choose “Options” and go to “Advanced” panel.



①. Select speaker volume and ring tone in handset

\* Open “Menu”,

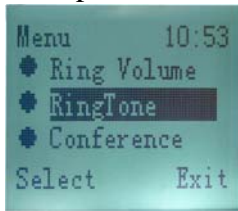


Select the “Ring Volume”, press Up/Down arrow to adjust the volume,

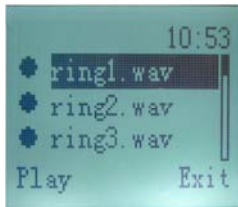


Then press “Exit”.

\* Open “Menu”,

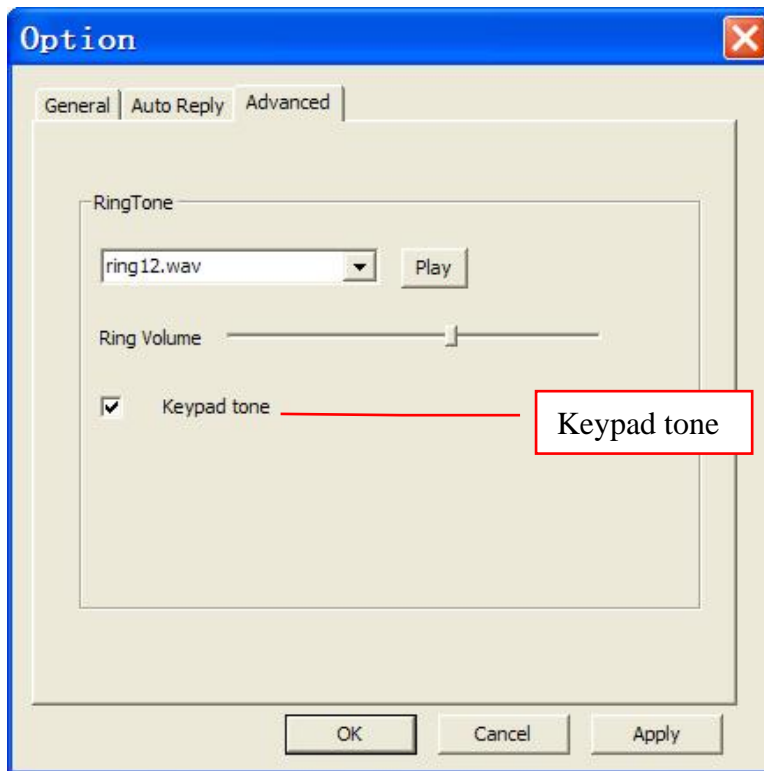


Select the “RingTone”, press Up/Down arrow to different ring,



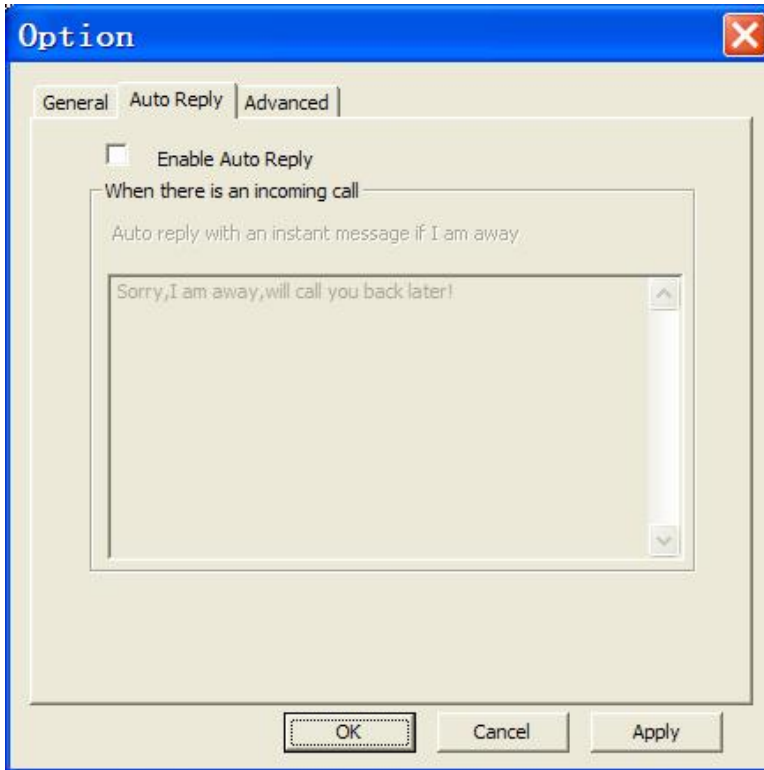
“Play” the right ring, then press “Exit”.

### Select Keypad tone



### Set Auto Reply

When you are on “Away” status,if you choose this selection,SimplySmart will send the caller “**Sorry,I am away,will call you back later!**”,and you will see the message in your Skype chatting window.






When a 3<sup>rd</sup> call comes when you are talking with two contacts,SimplySmart will send the caller a message “**Sorry,I am busy now,will call you back later!**” automatically,no matter you select this option or not,since this phone only supports user switching between two calls.

### Check Call History


<p>① Open “History”</p>	<p>The screenshot shows a green phone screen with a status bar at the top displaying '12:00' and a small 'S' icon. Below the status bar, the text 'TouchMe' is centered. At the bottom, there are two menu options: 'Menu' and 'History'.</p>
<p>② Use UP/Down Arrow to choose “In Call”/ “Out Call”, “Missed Call”, and press “Select”</p>	<p>The screenshot shows a green phone screen with a status bar at the top displaying '14:52'. Below the status bar, the text 'History' is visible. A list of call history options is shown: 'Missed Call' (highlighted with a blue bar), 'In Call', and 'Out Call'. At the bottom, there are two menu options: 'Select' and 'Exit'.</p>

## FAQ

**Q1: Why did I see the blue icon  rather than  in the taskbar? What's wrong with the driver software?**

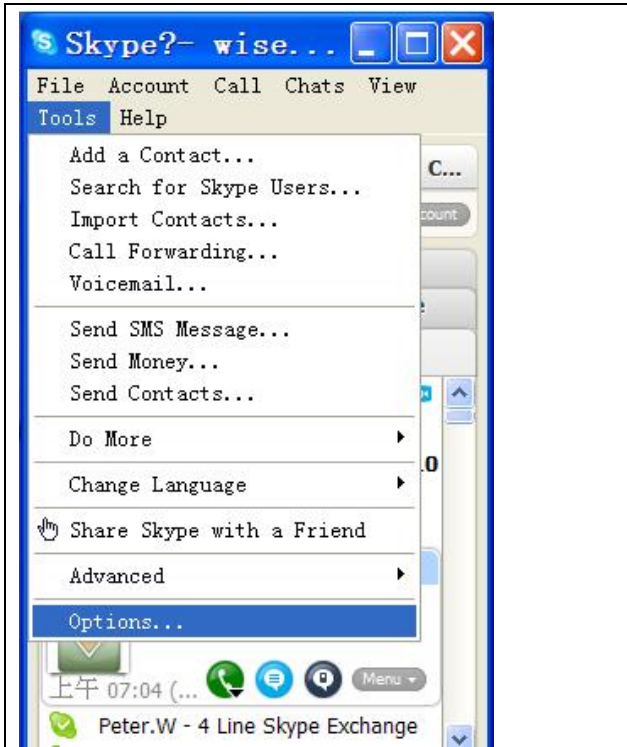
▶ If you see the icon ,

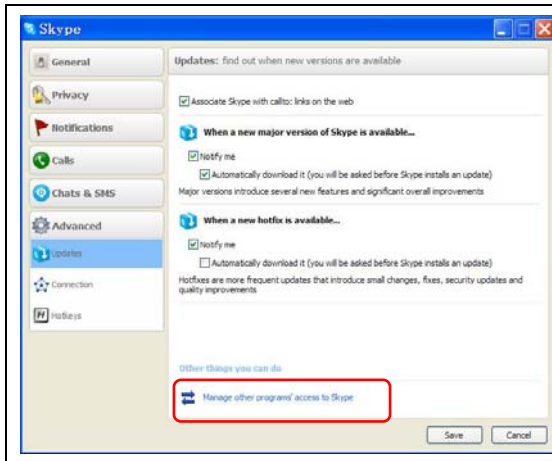
1) please check whether there is skype running at the moment. If not so, please run at least one;

2) If you have run Skype, please check whether you can see the icon  in the Skype Windows.

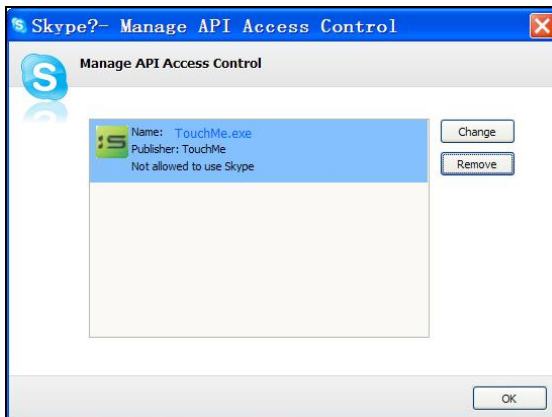


But if you cannot see this icon, please follow the steps:

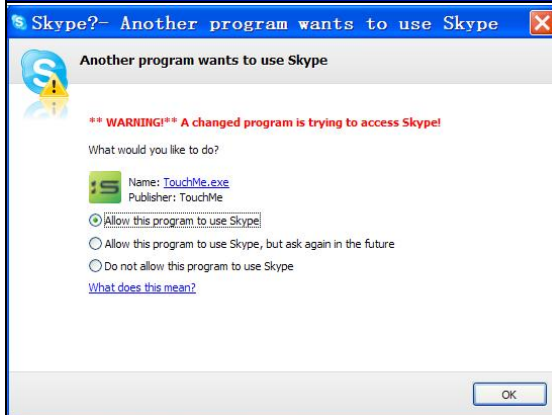
	<p><b>Step1:</b>            <i>“Tools”</i>  —<i>“Options”</i>.</p>
---	--



**Step 2:**  
***“Advanced”—“Up  
dates”--“Manage  
other program’s  
access to Skype”.***



**Step 3: Choose  
*“Change”***



**Step 4: Choose *“Allow  
this program to use  
Skype, but ask again in  
the future”***

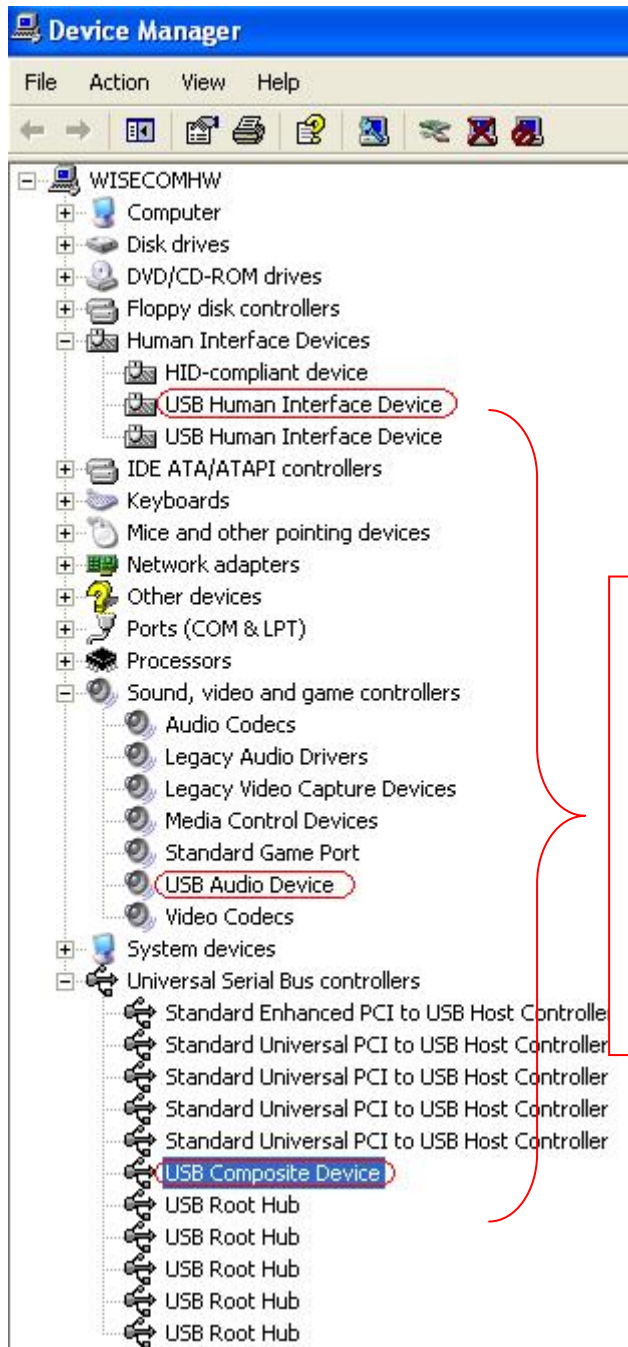
**Q2: After turning on the computer, I see the red icon. Why?**

▶ After plug in TouchMe if you see the icon, please go to your PC's **Device Manager** (“*Start*”—“*Setting*”—“*Control Panel*”—“*System*”—“*Hardware*”—“*Device Manager*”) to find whether the following four devices are in a normal state.

*“USB Human Interface Device”*

*“USB Audio Device”*

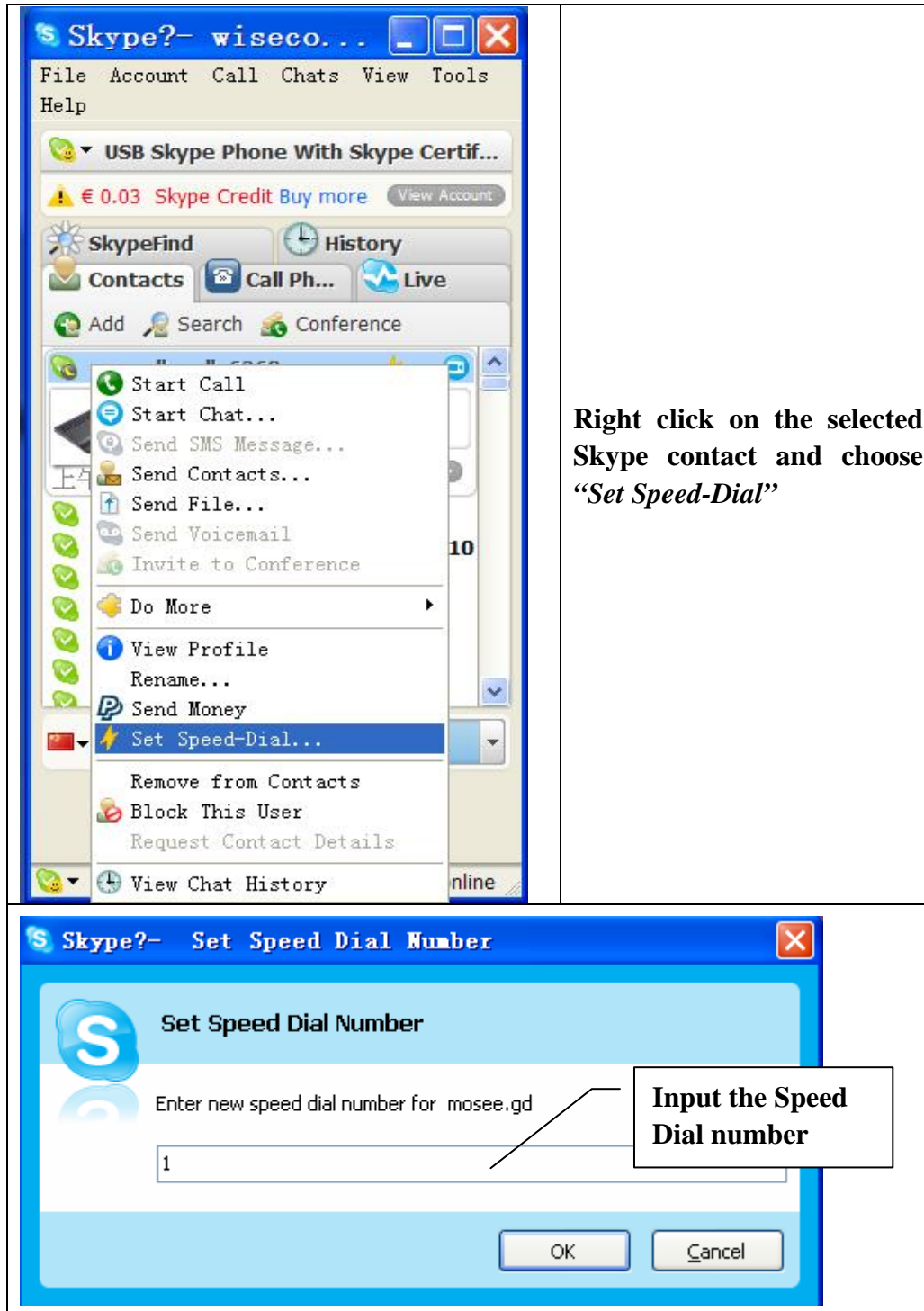
*“USB Composite Device”*



Usually, after plugging the USB TouchMe Phone in the USB port of your PC, you can find these three devices when you run the Skype applications and USB TouchMe Phone driver. If there is a **question mark** or an **exclamation mark** before any one of these device, then the USB port of your PC is in an abnormal state. Please check the USB port of your PC.

**Q3: How to assign a Speed-dial number for my contact?**

► You can assign Speed Dial number for the contacts directly on the related VoIP application’s panel. Here we take Skype for example.



Now you can use the Speed Dial number to make Skype calls.