

SimplySmart User Manual

Version 1.1

<i>SimplySmart User Manual</i>	<i>1</i>
Package Contains	3
Learn About Your SimplySmart	4
<i>USB Handset and Magnet Stand Base Layout</i>	<i>5</i>
<i>Keypad</i>	<i>6</i>
<i>LCD Icons</i>	<i>6</i>
Getting Started	6
<i>Step 1:Install the Latest Skype Applications</i>	<i>6</i>
<i>Step 2:Install SimplySmart Driver</i>	<i>6</i>
<i>Driver Icons</i>	<i>10</i>
Update SimplySmart Driver	11
The Call Functions	12
<i>Contacts Select</i>	<i>12</i>
<i>Make a Skype call</i>	<i>12</i>
<i>Make a SkypeOut call</i>	<i>12</i>
<i>Receive a Skype call</i>	<i>13</i>
<i>End a call</i>	<i>13</i>
<i>Mute and Hold function</i>	<i>13</i>
Other Functions	14
<i>Select Ring Tone and Speaker volume</i>	<i>14</i>
<i>Select Keypad tone</i>	<i>15</i>
<i>Set Auto Reply</i>	<i>16</i>
<i>Check Call History</i>	<i>16</i>
FAQ	17

Package Contains

When you receive your SimplySmart Phone, please check to make sure that your package contains the following items:

 A black mobile phone with a screen at the top displaying "SimplySmart" and a keypad below.	One SimplySmart phone
 A black, rectangular magnetic stand base.	Magnet Stand base
 A silver mini CD-ROM.	One mini installation CD

Note:

This user manual is written for the SimplySmart driver **version 1.0.0.8**.

Learn About Your SimplySmart

*** Product Overview**

Plug into your computer's USB Port, the fully functional keypad and the LCD screen can help you make/receive Skype calls even easier. No doubt it is the best PC companion for you to surf the Internet and enjoy popular Skype services.

Features:

- Metal Keypad with nightlight
- Seamlessly integrated with **Skype**
- 96*64 pixel large LCD with backlight. Supports all kinds of languages
- Contact List, Call history display on LCD screen
- Various chord music ring tones catering to different tastes.
- Fully functional keypad and LCD screen enables you to make/receive calls without using keyboard and mouse.
- Rings loudly on an incoming call.
- Echo cancellation, noise reduction
- Magnet stand base

*** Technical Data**

Weight	Handset:70g Base:68g
Dimensions	Handset:116*48*10.8mm Base:100*57.5*26mm
Cabling	1.5M USB Cable (USB 1.1),
LCD	40.7mm*41.2mm; 96*64 Pixel
Earphone Connector	2.5mm
Voltage	4~5.25 V
Operating Humidity	5~95%RH
Operating Temperature	-20~45°C




*** System Requirements**

- ✓ Microsoft Windows 2000/Windows 2003/Windows XP/Windows Vista
- ✓ Pentium 400MHz above processor/128MB RAM/16MB free hard disk capacity.
- ✓ One USB port available.
- ✓ Internet connection (ADSL, Cable Modem, Dial-Up, Wireless LAN) for the VoIP Service.







USB Handset and Magnet Stand Base Layout



Keypad

Key	Instructions
	Answer/Make a Skype call; OK; Activate Skype
	End/Cancel a Skype call; back to default screen/minimize Skype UI
	Scroll up/down a list; adjust volume for the speaker.

LCD Icons

Icons	Instructions	Icons	Instructions
	Skype Contact		Away status
	Online status		Offline status
	Unavailable status		Not sharing contact details

Getting Started

To use this USB SimplySmart phone, you need to install some needed software as shown below:

Step 1: Install the Latest Skype Applications

The latest version of Skype (Version 3.0 or above) is strongly recommended. You can download it from Skype's official website:

<http://www.skype.com/download/skype/windows/>

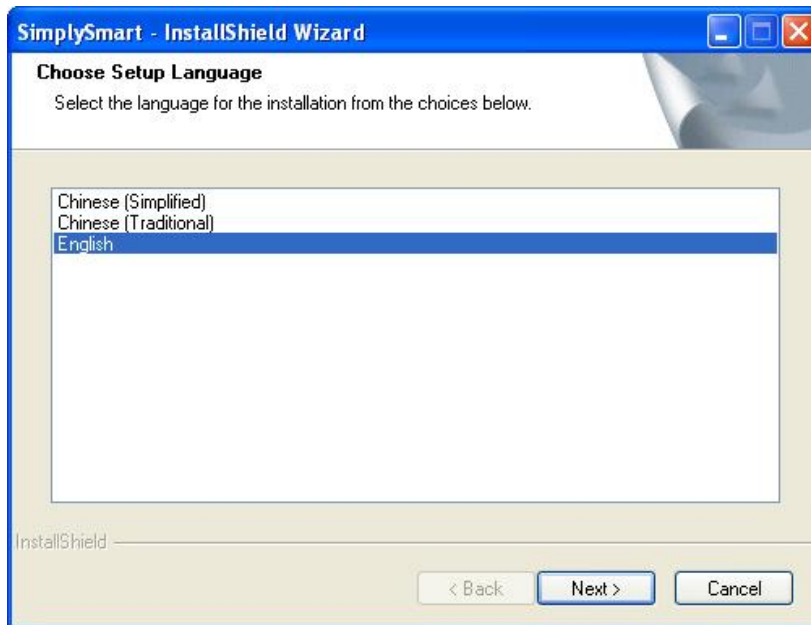
Step 2: Install SimplySmart Driver

You can insert the supplied installation CD into your PC, you will see the volume as below.

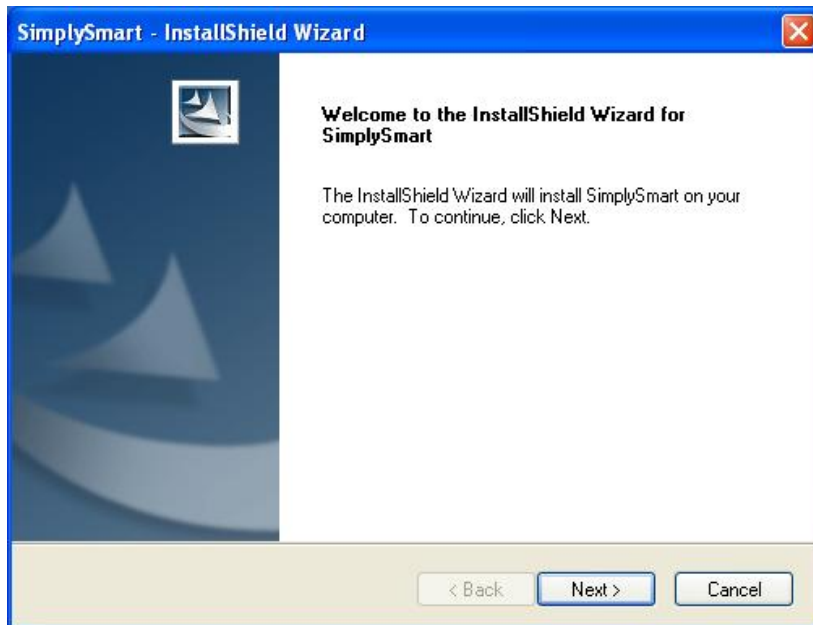
If you can not see the autorun volume, please install the driver manually. Open "My Computer", you will see a "SimplySmart" CD icon under "Devices with removable storage", right click "SimplySmart" CD icon, click "Open", open "setup" folder, double click "setup.exe" to start installing.



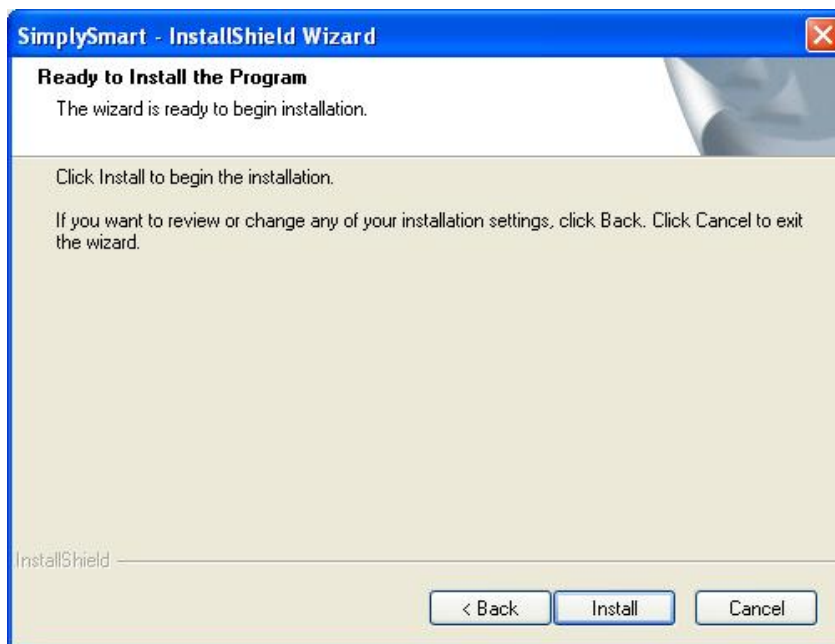
Click “Install Driver”



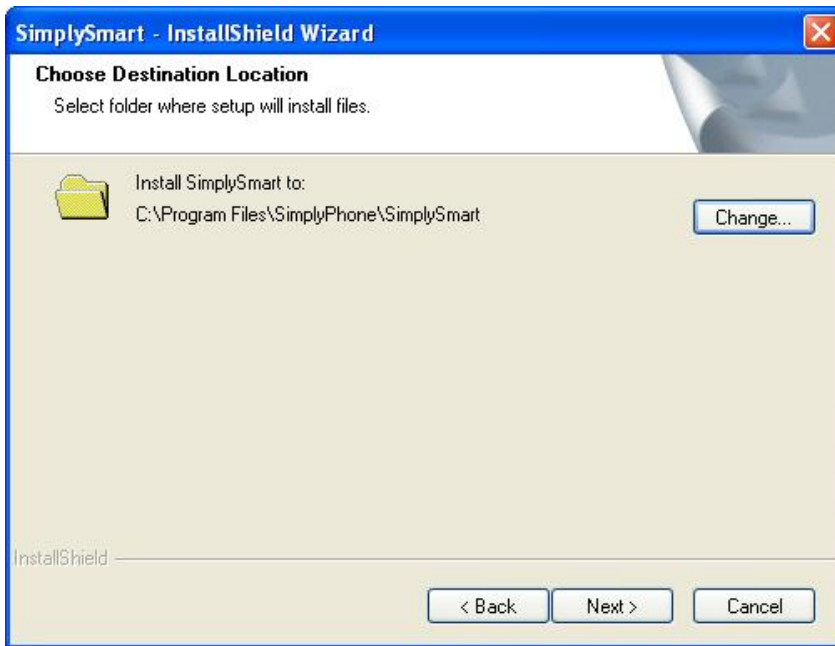
Select the language you want to install, Click “Next”



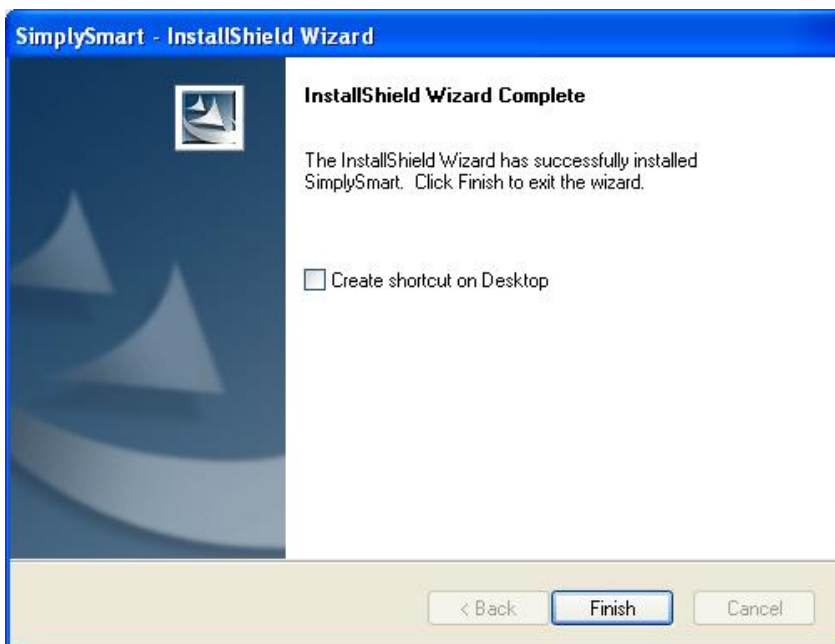
Click “Next”



Click “Install”

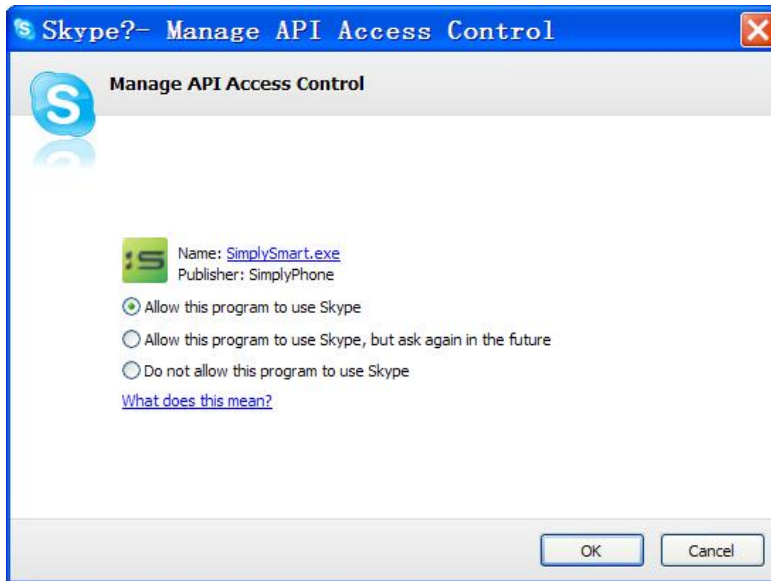



Choose the folder you want to install,Click “Next”



Select “Create shortcut on Desktop”,then click “Finish”.



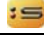

When the SimplySmart phone driver runs for the first time, Skype will pop up the following window. Please select “Allow this program to use Skype” as the illustration shown below:



Now, the LCD screen will be shown as below and you can see a Green icon  in the task bar which indicates you are ready to make/receive calls with the SimplySmart phone.

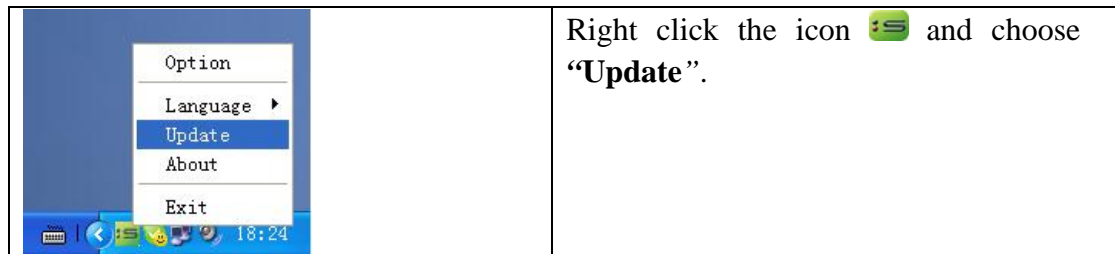


Driver Icons

Driver Icons	Indications
	SimplySmart
	SimplySmart fails to communicate with Skype applications.
	SimplySmart fails to communicate with your computer.
	SimplySmart was denied by Skype API

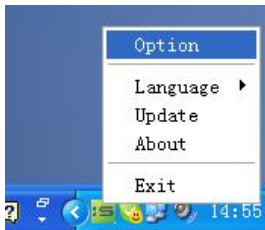
Update SimplySmart Driver

Please remember to update the **SimplySmart** driver regularly. You can follow this guideline here:

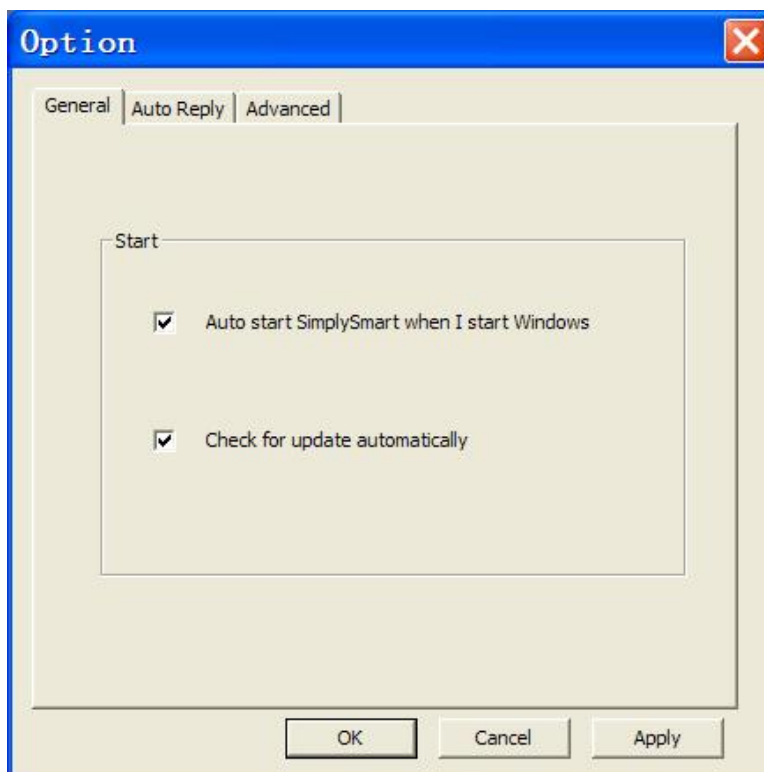


Or you can enable your driver to check for update automatically in the driver’s panel as follows:

① Right click the icon , and choose “Option”.




② Go to “General” panel and check before “Check for update automatically”.

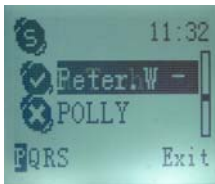


The Call Functions


Contacts Select

Press  to activate the contacts list,

- ① Hold up or Down arrow, the contact will autoscroll up or down, and this device support loop scroll too.
- ② Select the contacts by initials, suppose you press key "7", it means you select the contacts with "P" initial, if you press key "7" second time, you will get the contacts with "Q" initial, vice versa.




Make a Skype call


- ① Select the contacts
- ② Press  to make the call.

Note:

Or you can use Speed-dial number to make calls.

Dial the Speed-dial number and press  to make the call.


Example:

	<p>Supposed you want to make calls to this Skype contact. Please dial: "02" + </p>
--	--

Note: For how to assign Speed Dial for your contacts, please refer to "FAO" O3 in this manual.

Make a SkypeOut call

- ① Press 00 + "country code" + "area code" + "phone number". Or hold "0" button + "country code" + "city code" + "phone number".

② Press  to make the call.


Examples:

(Here we use the country code "1" for calling USA): 00 1 555 1234567

Note: For more detailed usages of making a SkypeOut call, please visit Skype's official website: <http://www.skype.com>.

If you input a wrong number, please press right “←”key to clear it.


Receive a Skype call

Press  to receive calls.

If you find the volume of earpiece is too small or too big, you can use Up/Down arrow to adjust the volume.

End a call

Press  to end a call.

If you want to minimize the Skype UI after ending your call, please press  again.

Mute and Hold function


* Mute menu

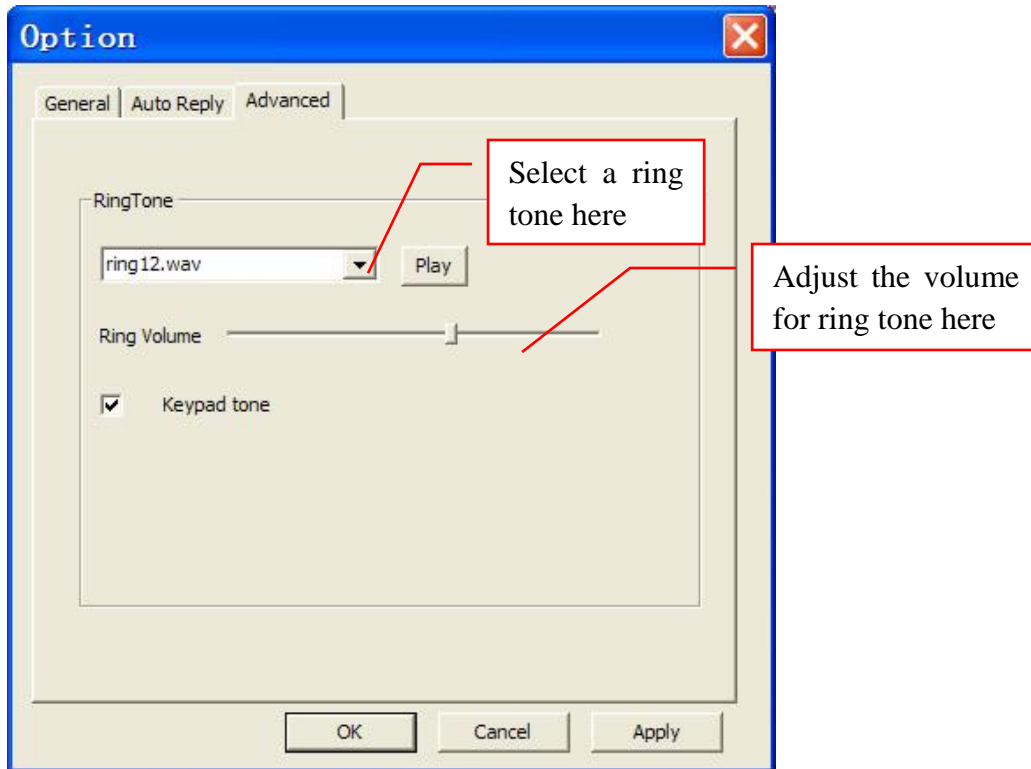


Other Functions

Select Ring Tone and Speaker volume

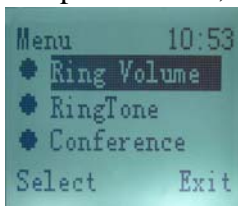
①. Select ring tone and speaker volume in driver

To select your favorite chord music ring tone, please right click the tray icon , choose “Options” and go to “Advanced” panel.



①. Select speaker volume and ring in handset

* Open “Menu”,



Select the “Ring Volume”, press Up/Down arrow to adjust the volume,



Then press “Exit”.

* Open “Menu”,

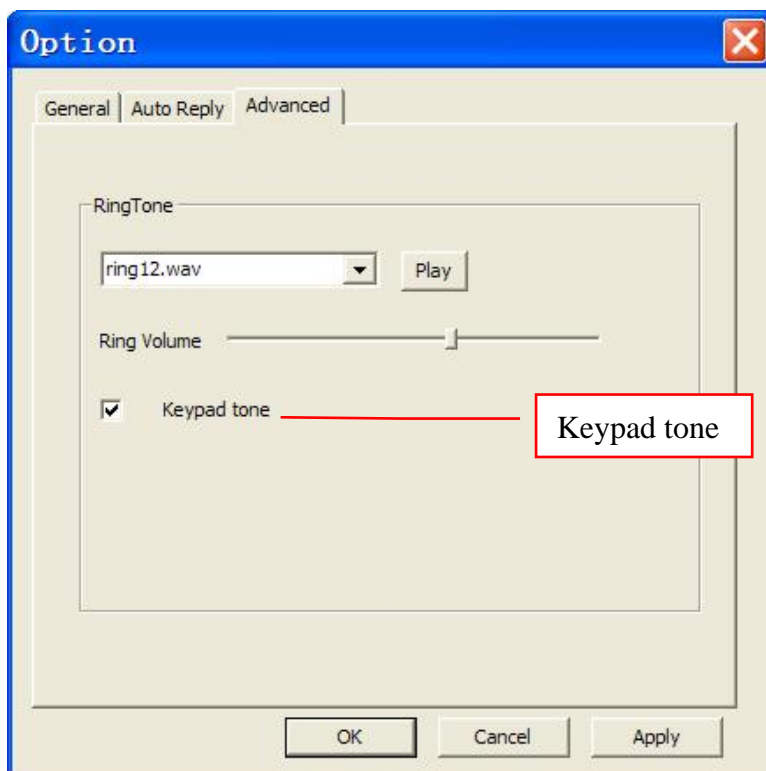


Select the “RingTone”,press Up/Down arrow to different ring,

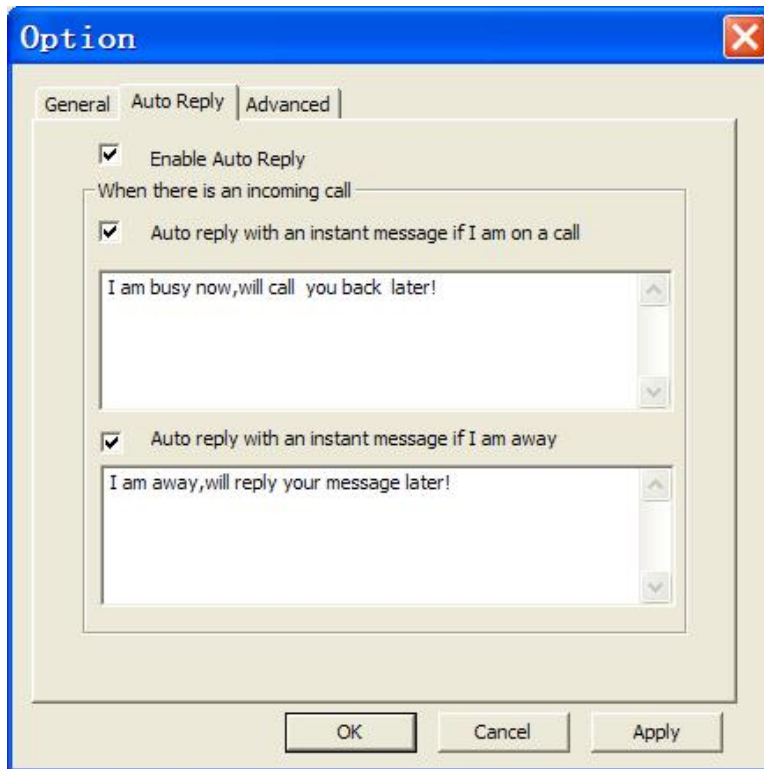


“Play” the right ring,then press “Exit”.



Select Keypad tone





Set Auto Reply




Check Call History


<p>① Open “History”</p>	
<p>② Use UP/Down Arrow to choose In Call/Out Call, Missed Call, and press “Select”.</p>	

FAQ

Q1: Why did I see the blue icon  rather than  in the taskbar? What's wrong with the driver software?

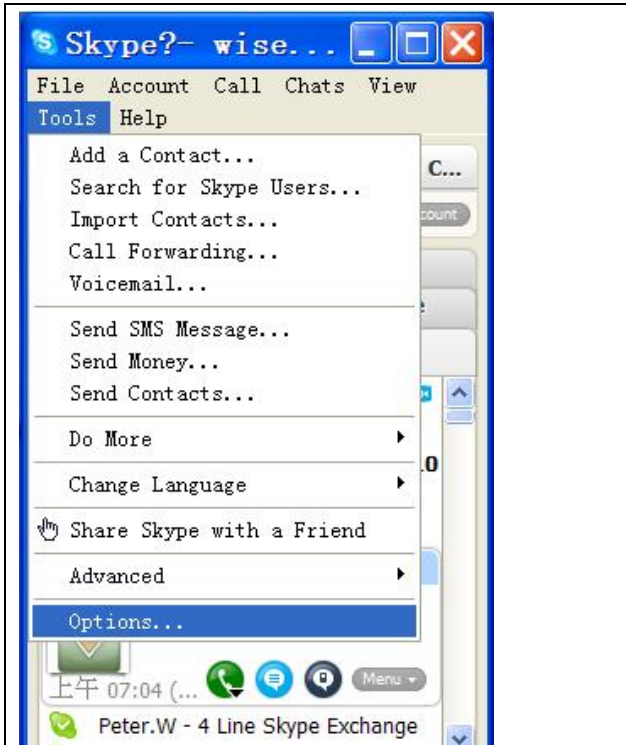
▶ If you see the icon ,

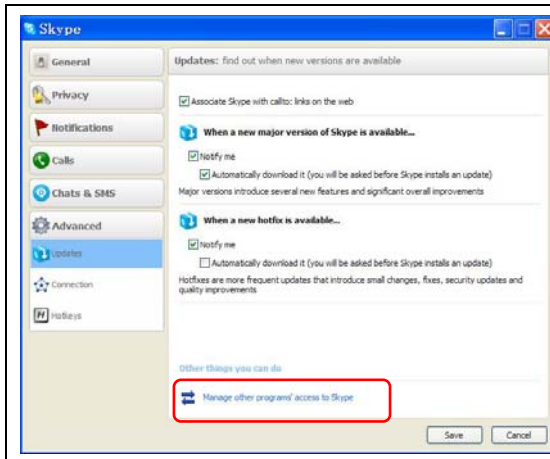
1) please check whether there is skype running at the moment. If not so, please run at least one;

2) If you have run Skype, please check whether you can see the icon  in the Skype Windows.

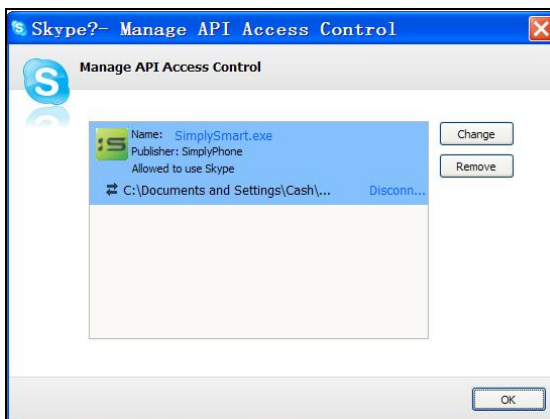


But if you cannot see this icon, please follow the steps:

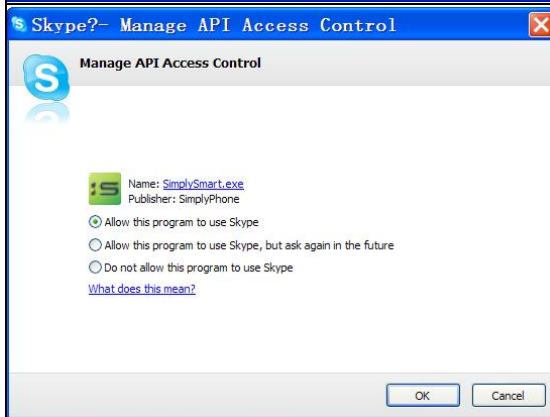
	<p>Step1: <i>“Tools”</i> —<i>“Options”</i>.</p>
---	--



Step 2:
*“Advanced”—“Up
 dates”--“Manage
 other program’s
 access to Skype”.*



Step 3: Choose
“Change”



Step 4: Choose *“Allow
 this program to use
 Skype, but ask again in
 the future”*

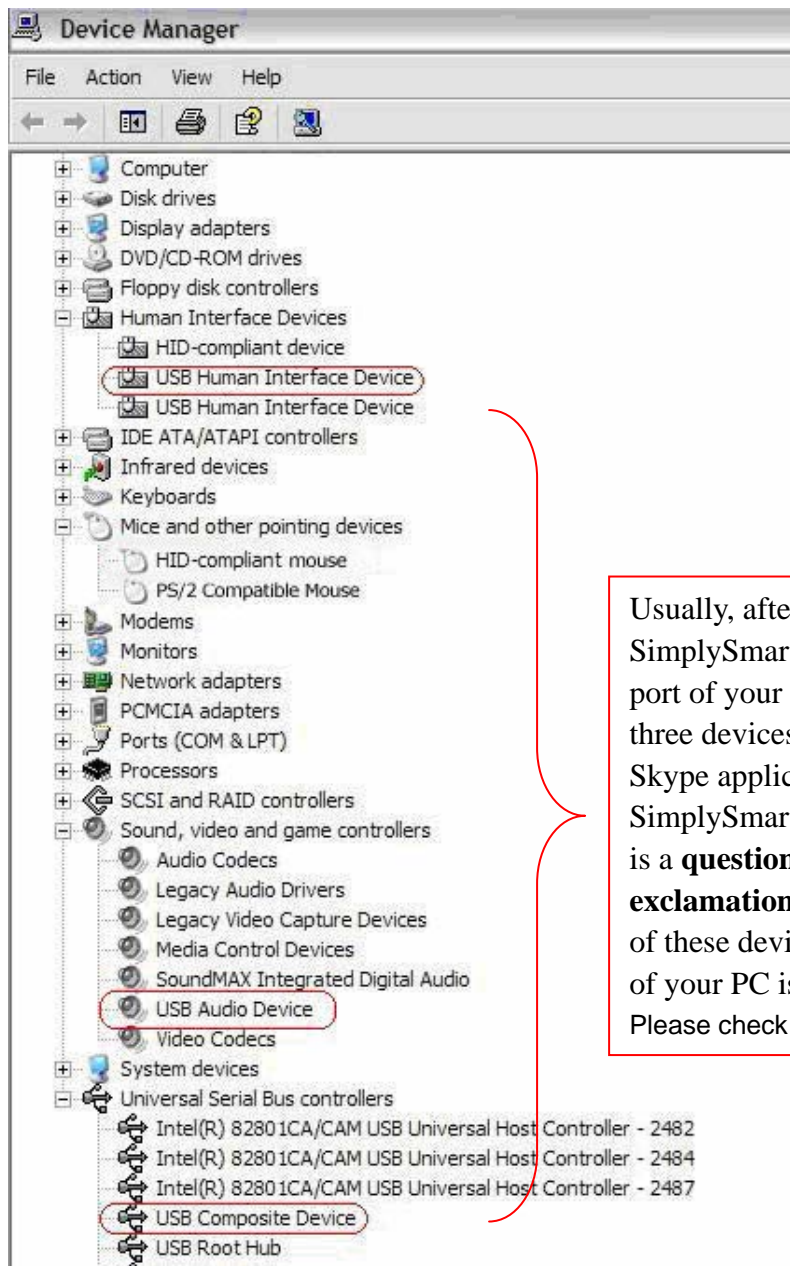
Q2: After turning on the computer, I see the red icon. Why?

▶ After plug in SimplySmart if you see the icon, please go to your PC's **Device Manager** (“*Start*”—“*Setting*”—“*Control Panel*”—“*System*”—“*Hardware*”—“*Device Manager*”) to find whether the following four devices are in a normal state.

“USB Human Interface Device”

“USB Audio Device”

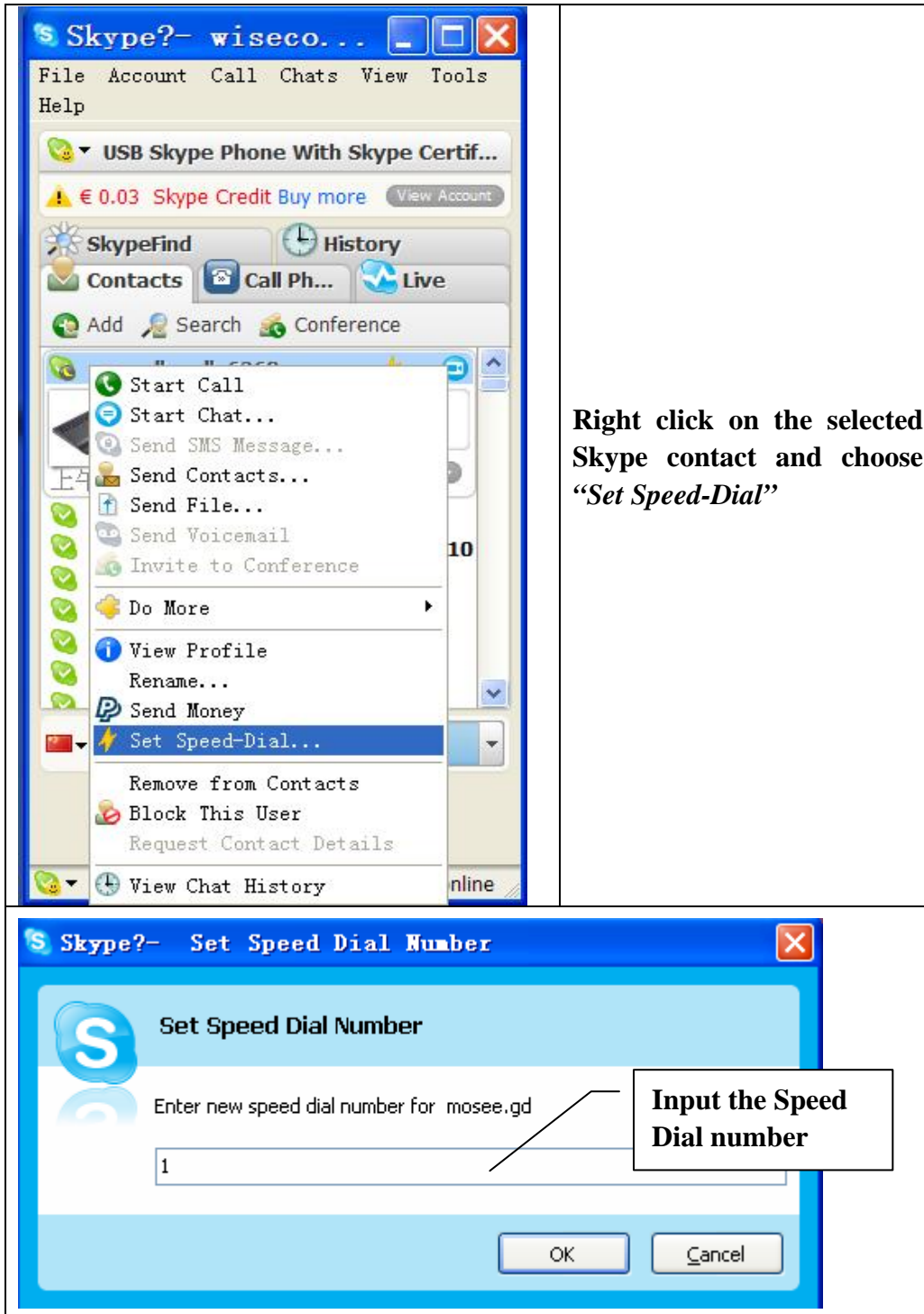
“USB Composite Device”



Usually, after plugging the USB SimplySmart Phone in the USB port of your PC, you can find these three devices when you run the Skype applications and USB SimplySmart Phone driver. If there is a **question mark** or an **exclamation mark** before any one of these device, then the USB port of your PC is in an abnormal state. Please check the USB port of your PC.

Q3: How to assign a Speed-dial number for my contact?

► You can assign Speed Dial number for the contacts directly on the related VoIP application’s panel. Here we take Skype for example.



Now you can use the Speed Dial number to make Skype calls.